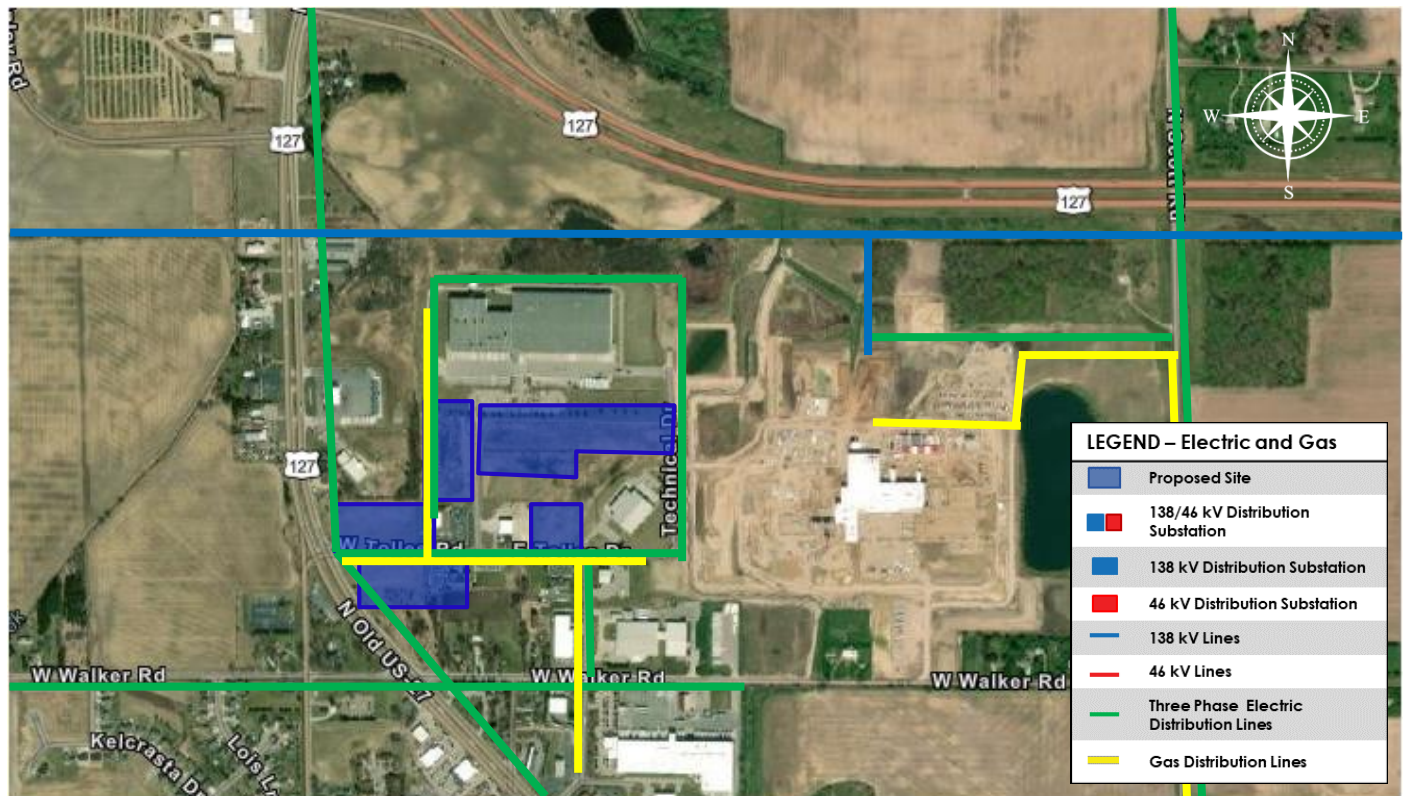


Clinton County/St. Johns St. Johns Industrial Park



All existing facility locations are approximate and are not to be used for construction purposes.
Always contact MISS DIG 811 before you dig.

Electric Site Benefits

- **Distribution System**
 - Predicted reliability of up to 99.95% for 14.4/24.9 kV system.
 - The distribution system is located onsite/adjacent to the site.
 - Current available capacity is 1 MW. Additional capacity may be available with system upgrades.
- **46 kV System**
 - Predicted reliability of up to 99.995%. The predicted reliability percentage represents the estimated amount of time the facility is in service.
 - The 46 kV system is located approximately 1.3 miles away.
 - Facilities will be sized to meet the energy needs of the customer and available system capacity determined at the time of a specific request.
- **138 kV System**
 - Predicted reliability of up to 99.997%. The predicted reliability percentage represents the estimated amount of time the facility is in service.
 - The 138 kV system is located approximately 0.4 miles away.
 - Facilities will be sized to meet the energy needs of the customer and available system capacity determined at the time of a specific request.

Natural Gas Site Benefits

- **Distribution System**
 - Multiple medium-capacity gas mains currently available.
 - Up to 10 psig delivery pressures readily available, depending upon customer load requirements.

For additional information

Corey Utley, Economic Development Manager | 517-331-6442 |
corey.utley@cmsenergy.com